

Getting Started with NI PXI-8252 for Windows

This document explains the installation and specifications of the NI PXI-8252 1394 adapter for Microsoft Windows.

Unpacking

Carefully inspect the shipping container and the PXI-8252 card for damage. If damage appears to have been caused during shipment, file a claim with the carrier. Retain the packing material for possible inspection and/or reshipment.

What You Need to Get Started

To set up and use the NI PXI-8252, you need the following items:

- PXI-8252 card
- Number 1 Phillips screwdriver

Installation

The PXI-8252 card is easy to install and use. It is an OHCI-compliant 1394 device, meaning the drivers are already provided in Windows 98 Second Edition and later Windows operating systems. No configuration is required. Once installed, your PXI-8252 card is ready to use.

Hardware Installation

Complete the following steps to install your PXI-8252 card.

1. Shut down the operating system and power off the computer.
2. Seat the PXI-8252 card firmly in any slot of the PXI chassis other than Slot 1, as shown in Figure 1.
3. Use the number 1 Phillips screwdriver to tighten the top and bottom screws which secure the PXI-8252 in place.



Figure 1. Seating the PXI-8252 Card

4. Power on the system.



Note If you are installing the PXI-8252 in a chassis using a PXI embedded controller, power on the chassis to power up the system. If you are using a PXI *remote* controller, such as MXI-3, power on the PXI chassis first, then power on the remote PC. If you do not power on the chassis and remote system in the correct order, the remote system will not recognize the PXI bus.

Windows 2000/XP

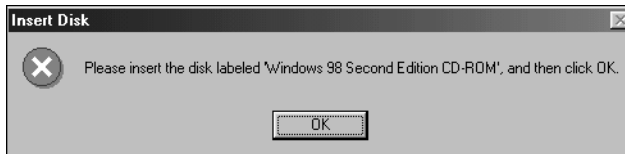
Windows 2000/XP automatically detects the new card and installs the drivers. You may be prompted for the original Windows 2000/XP CD.

Windows 98

Windows automatically detects the new hardware and displays an **Add New Hardware Wizard** window. Choose the **Recommended** options when given a choice.

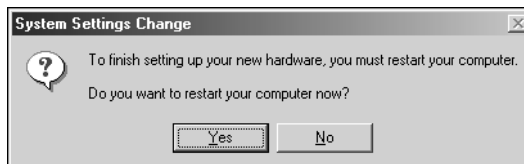


Tip If Windows displays a dialog box indicating it cannot locate a file on the Windows 98 CD, try inserting the Windows 98 installation CD, telling Windows to copy files from either the top directory or the win98 directory of the CD-ROM drive (typically d: \ or d: \win98\).



Windows Me

Windows Me automatically detects the new hardware and displays an **Add New Hardware Wizard** window. Choose the **Recommended** options when given a choice.



Specifications



Caution Misuse of this equipment may impair the protection features included.

Physical

Dimensions

PXI 16.0 by 10.0 cm (6.3 by 3.9 in.),
3U

Connector

1394..... Female, 6 pin (3)

PXI 32-bit, Universal Signaling

Signaling

PXI V_{io} 3.3 V/5 V (Universal), 33 MHz

1394..... IEEE 1394a-1995 S100, S200,
S400 transfer rates, OHCI v1.0
software interface. Actual 1394
transfer rates are system
dependent.

Power Consumption

Typical 140 mA at 3.3 V

Theoretical maximum 315 mA at 3.3 V
1.8 A at 5.0V
400 mA at 12 V

Bus Power

1394..... 12 V \pm 10%, 12 W total, can be
divided among 1394 ports

Environment

Operating

Ambient temperature0 to 55 °C

Relative humidity10 to 90%, noncondensing

Maximum altitude.....2,000 m

Pollution Degree2

Indoor use only

Storage

Ambient temperature-20 to 70 °C

Relative humidity5 to 95%, noncondensing

Shock

Operating¹30 g peak, half-sine, 11 ms pulse

Random Vibration

Operating²5 to 500 Hz, 0.3 g_{rms}

Nonoperating5 to 500 Hz, 2.4 g_{rms}

Safety

This product is designed to meet the requirements of the following standards of safety for electrical equipment for measurement, control, and laboratory use:

- IEC 61010-1, EN 61010-1
- UL 3111-1, UL 61010B-1
- CAN/CSA C22.2 No. 1010.1



Note For UL and other safety certifications, refer to the product label, or visit ni.com/hardref.nsf, search by model number or product line, and click the appropriate link in the Certification column.



Note The protection provided by this equipment may be impaired if it is used in a manner not described in this document.

¹ Tested in accordance with IEC-60068-2-28. Test profile developed in accordance with MIL-PRF-28800F.

² Tested in accordance with IEC-60068-2-64. Nonoperating test profile exceeds the requirements of MIL-PRF-28800F, Class 3.

Electromagnetic Compatibility

Emissions	EN 55011 Class A at 10 m. FCC Part 15A above 1 GHz
Immunity	EN 61326:1997 + A2:2001, Table 1
EMC/EMI.....	CE, C-Tick, and FCC Part 15 (Class A) Compliant



Note For EMC compliance, you *must* operate this device with shielded cabling.

CE Compliance

This product meets the essential requirements of applicable European Directives, as amended for CE marking, as follows:

Low-Voltage Directive (safety) 73/23/EEC

Electromagnetic Compatibility
Directive (EMC) 89/336/EEC



Note Refer to the Declaration of Conformity (DoC) for this product for any additional regulatory compliance information. To obtain the DoC for this product, visit ni.com/hardref.nsf, search by model number or product line, and click the appropriate link in the Certification column.

Technical Support Resources

National Instruments corporate headquarters is located at 11500 North Mopac Expressway, Austin, Texas, 78759-3504. National Instruments also has offices located around the world to help address your support needs. You can access our branch office Web sites from the Worldwide Offices section of ni.com. Branch office Web sites provide up-to-date contact information, support phone numbers, email addresses, and current events.

If you have searched the technical support resources on our Web site and still cannot find the answers you need, contact your local office or National Instruments corporate. For telephone support in the United States, dial 512 795 8248. For telephone support outside the United States, contact your local branch office:

Australia 1800 300 800, Austria 43 0 662 45 79 90 0, Belgium 32 0 2 757 00 20,
Brazil 55 11 3262 3599, Canada (Calgary) 403 274 9391,
Canada (Ottawa) 613 233 5949, Canada (Québec) 450 510 3055,
Canada (Toronto) 905 785 0085, Canada (Vancouver) 514 685 7530,
China 86 21 6555 7838, Czech Republic 420 224 235 774,
Denmark 45 45 76 26 00, Finland 385 0 9 725 725 11, France 33 0 1 48 14 24 24,
Germany 49 0 89 741 31 30, Greece 30 2 10 42 96 427, India 91 80 51190000,
Israel 972 0 3 6393737, Italy 39 02 413091, Japan 81 3 5472 2970,
Korea 82 02 3451 3400, Malaysia 603 9131 0918, Mexico 001 800 010 0793,
Netherlands 31 0 348 433 466, New Zealand 0800 553 322,
Norway 47 0 66 90 76 60, Poland 48 22 3390150, Portugal 351 210 311 210,
Russia 7 095 783 68 51, Singapore 65 6226 5886, Slovenia 386 3 425 4200,
South Africa 27 0 11 805 8197, Spain 34 91 640 0085, Sweden 46 0 8 587 895 00,
Switzerland 41 56 200 51 51, Taiwan 886 2 2528 7227, Thailand 662 992 7519,
United Kingdom 44 0 1635 523545

MXI™, National Instruments™, NI™, and ni.com™ are trademarks of National Instruments Corporation. Product and company names mentioned herein are trademarks or trade names of their respective companies. For patents covering National Instruments products, refer to the appropriate location: **Help»Patents** in your software, the `patents.txt` file on your CD, or ni.com/patents.

© 2003 National Instruments Corp. All rights reserved.



323753A-01

Dec03